

# INDEX

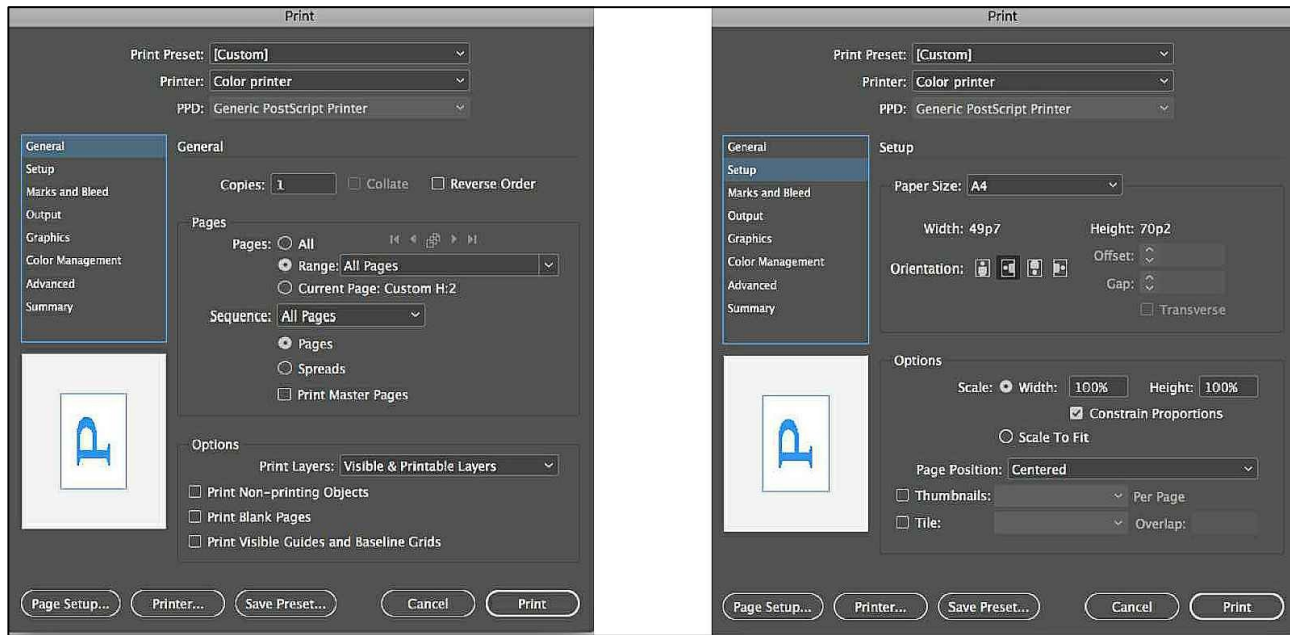
## (TUNIC TOP – Small)

• INDEX	Pg 1
• DRAFT INSTRUCTIONS	Pg 2
• TEMPLATE 1	Pg 3
• TEMPLATE 2	Pg 4
• TEMPLATE 1A	Pg 5
• TEMPLATE 1B	Pg 6
• TEMPLATE 1C	Pg 7
• TEMPLATE 1D	Pg 8
• TEMPLATE 1E	Pg 9
• TEMPLATE 1F	Pg 10
• TEMPLATE 1G	Pg 11
• TEMPLATE 1H	Pg 12
• TEMPLATE 1I	Pg 13
• TEMPLATE 1J	Pg 14
• TEMPLATE 1K	Pg 15
• TEMPLATE 1L	Pg 16
• TEMPLATE 2A	Pg 17
• TEMPLATE 2B	Pg 18
• TEMPLATE 2C	Pg 19
• TEMPLATE 2D	Pg 20
• TEMPLATE 2E	Pg 21
• TEMPLATE 2F	Pg 22
• TEMPLATE 2G	Pg 23
• TEMPLATE 2H	Pg 24
• TEMPLATE 2I	Pg 25
• TEMPLATE 2J	Pg 26
• TEMPLATE 2K	Pg 27
• TEMPLATE 2L	Pg 28

**DRAFT INSTRUCTIONS**

**PLEASE FOLLOW THE FOLLOWING STEPS IN ORDER TO GET THE CORRECT DRAFT**

1. Download the PDF and print it out on A4 size paper
2. Ensure that your Printer is set to General and Page Position is Centered
3. Please select Print Actual Size option in the Printer Setup
4. To stick the Pattern - Cut along the outer margins (Blue) printed on the sheet as and when required
5. Join the sheets together following the Number Pattern on them as shown in the full pattern templates below
6. Cut along the Dotted Line for the Final Pattern -----
7. Your Draft is ready



**TUNIC TOP - Size Chart**

Measurements	Front ( cm )	Back ( cm )	Front ( cm )	Back ( cm )	Front ( cm )	Back ( cm )	Front ( cm )	Back ( cm )	Front ( cm )	Back ( cm )
	XS	XS	S	S	M	M	L	L	XL	XL
Ready top Length	72.4	72.4	74.3	74.3	74.9	74.9	76.2	76.2	77.5	77.5
Neck depth	7.6	2.5	8.3	2.5	8.3	2.5	8.9	2.5	9.2	2.5
neck width	7.6	7.6	7.6	7.6	8.3	8.3	8.3	8.3	9.5	9.5
Shoulder to chest	21.6	21.6	22.9	22.86	23.5	23.5	24.8	24.8	25.4	25.4
Neckline to chest	14.0	19.1	14.6	20.3	15.2	21.0	15.9	22.2	16.2	22.9
Chestline to hemline	50.8	50.8	51.4	51.4	51.4	51.4	51.4	51.4	52.1	52.1
Across shoulder	31.8	31.8	31.8	31.8	32.4	32.4	33.7	33.7	34.3	34.3
Shoulder line	24.1	24.1	24.1	24.1	24.1	24.1	24.8	24.8	24.8	24.8
Across chest	25.6	25.5	25.4	25.4	26.2	26.2	27.3	27.3	28.0	28.0
shoulder drop	3.8	3.8	3.8	3.8	3.8	3.8	3.8	3.8	3.8	3.8
Hemline	30.5	30.5	31.1	31.1	31.8	31.8	32.4	32.4	33.0	33.0
Sleeve hemline	17.8	17.8	17.8	17.8	18.4	18.4	18.4	18.4	19.1	19.1
Hem depth	2.5	2.5	2.5	2.5	2.5	2.5	2.5	2.5	2.5	2.5
Side seam	47.0	47.0	47.6	47.6	47.6	47.6	48.3	48.3	48.3	48.3

**TUNIC TOP - Material Chart**

FABRIC & MATERIAL REQUIREMENT	XS	S	M	L	XL
Fabric - 45"	2.0 mtr	2.0 mtr	2.0 mtr	2.0 mtr	2.0 mtr
Finishing Fabric	0.25 mtr	0.25 mtr	0.25 mtr	0.25 mtr	0.25 mtr

1A

TEMPLATE 1  
ALL DIMENSIONS IN CENTIMETERS  
TUNIC TOP

FRONT  
Size: Small (S)  
Cut - 1 piece

1B

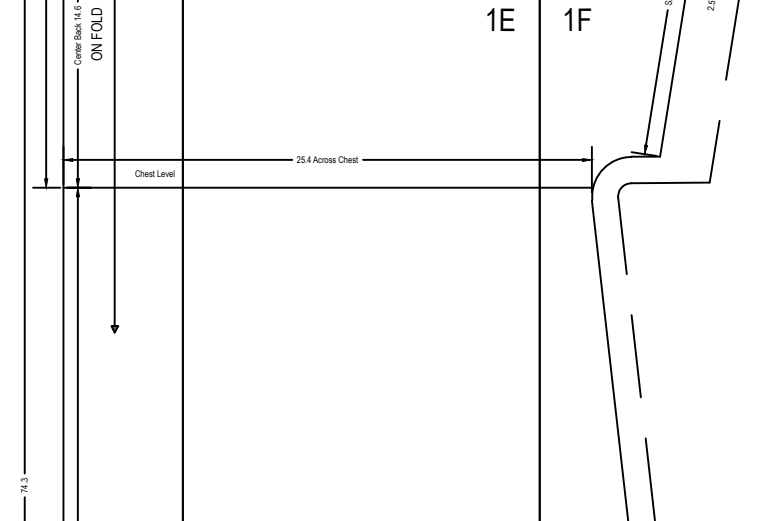
1C



1D

1E

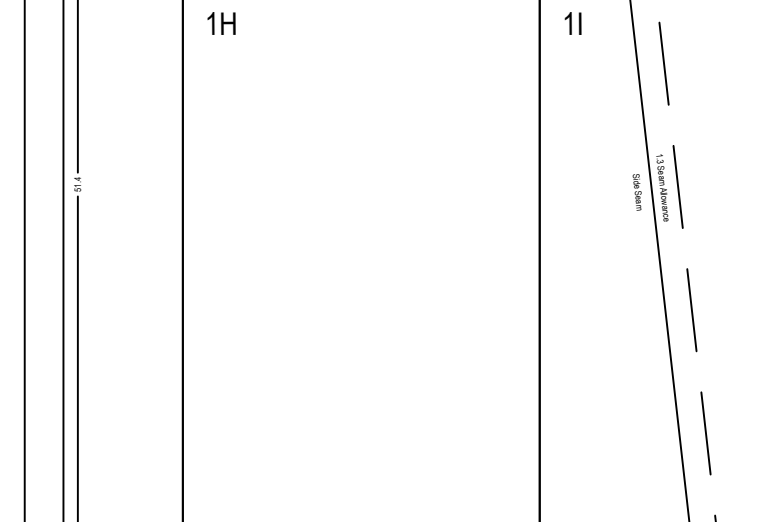
1F



1G

1H

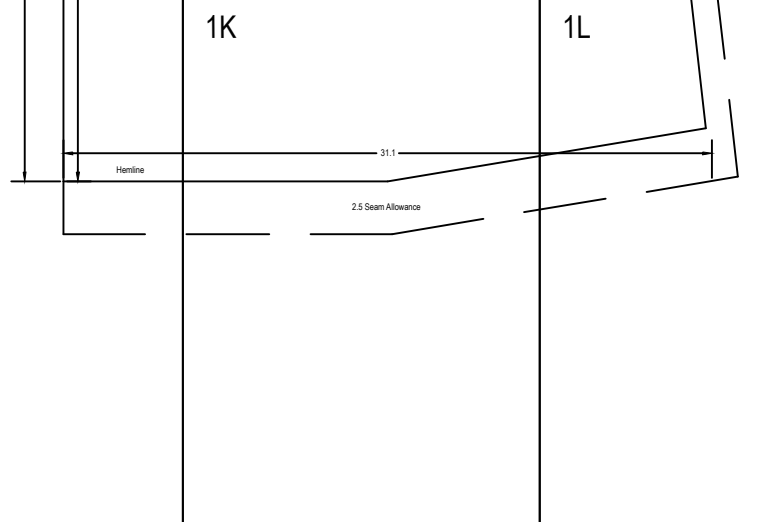
1I



1J

1K

1L



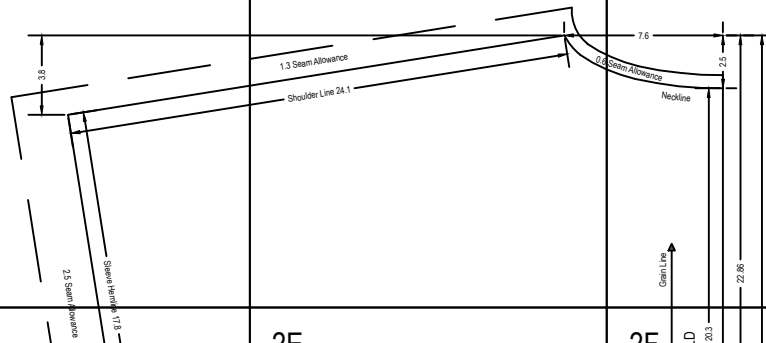
2A

TEMPLATE 2  
ALL DIMENSIONS IN CENTIMETERS  
TUNIC TOP

BACK  
Size: Small (S)  
Cut - 1 piece

2B

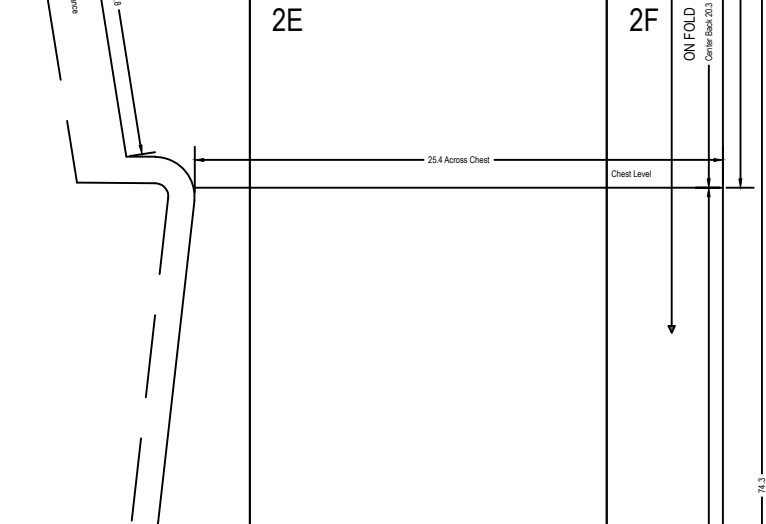
2C



2D

2E

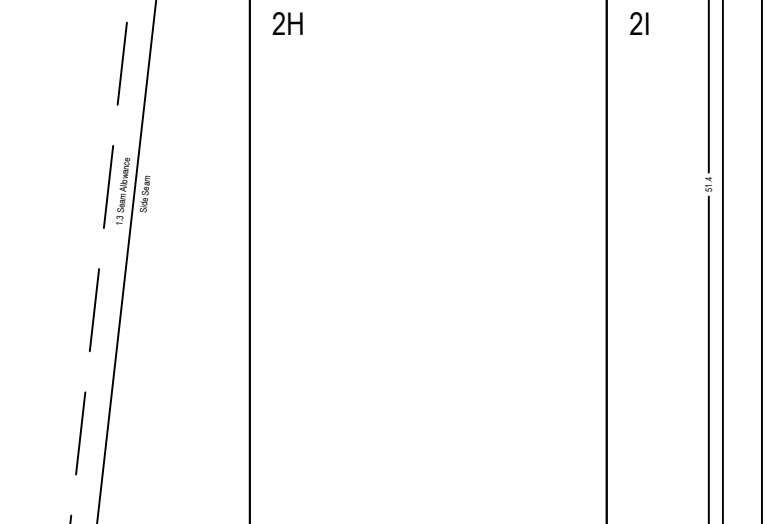
2F



2G

2H

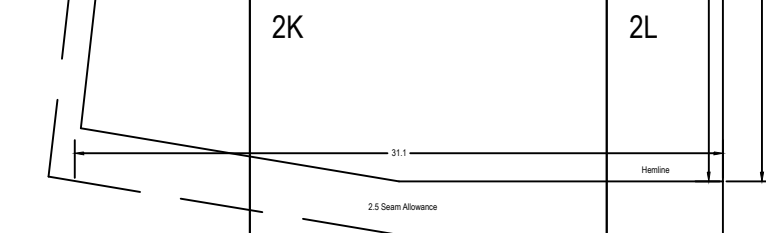
2I



2J

2K

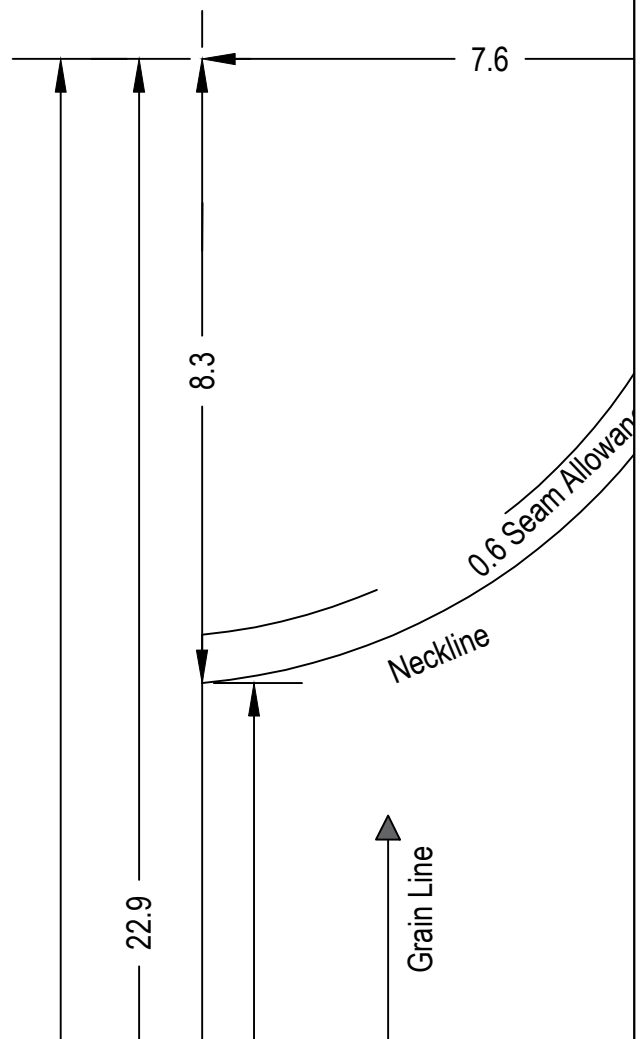
2L



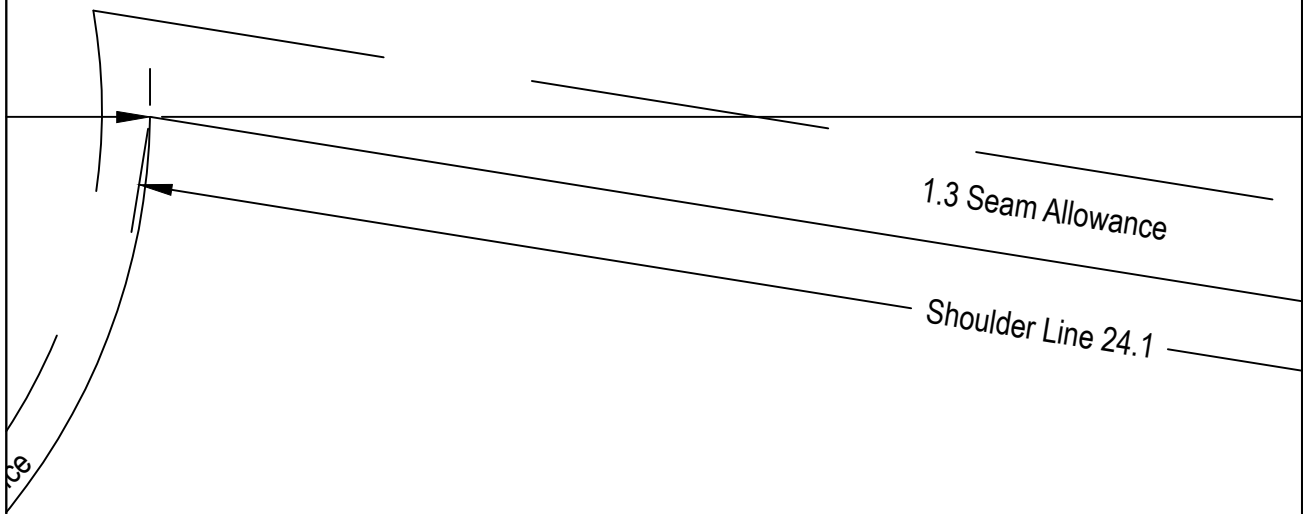
# 1A

## TEMPLATE 1 ALL DIMENSIONS IN CENTIMETERS TUNIC TOP

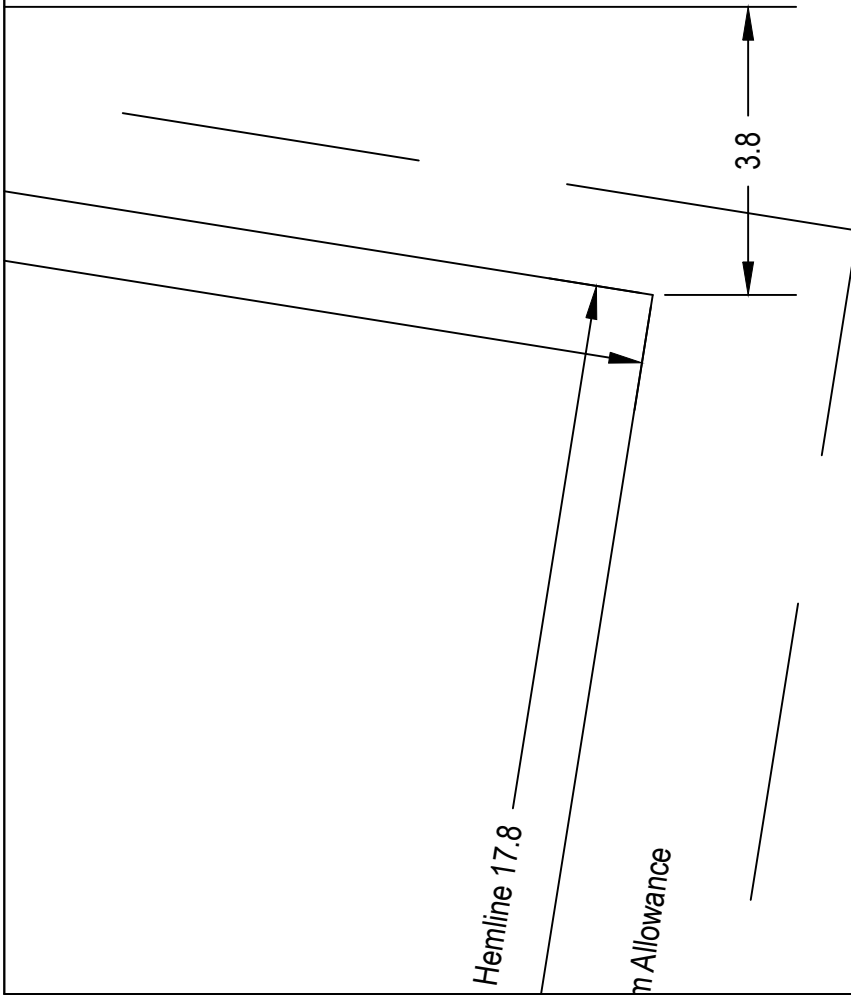
FRONT  
Size: Small (S)  
Cut - 1 piece



1B



1C



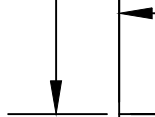
1D

74.3

Center Back 14.6

ON FOLD

Chest Level





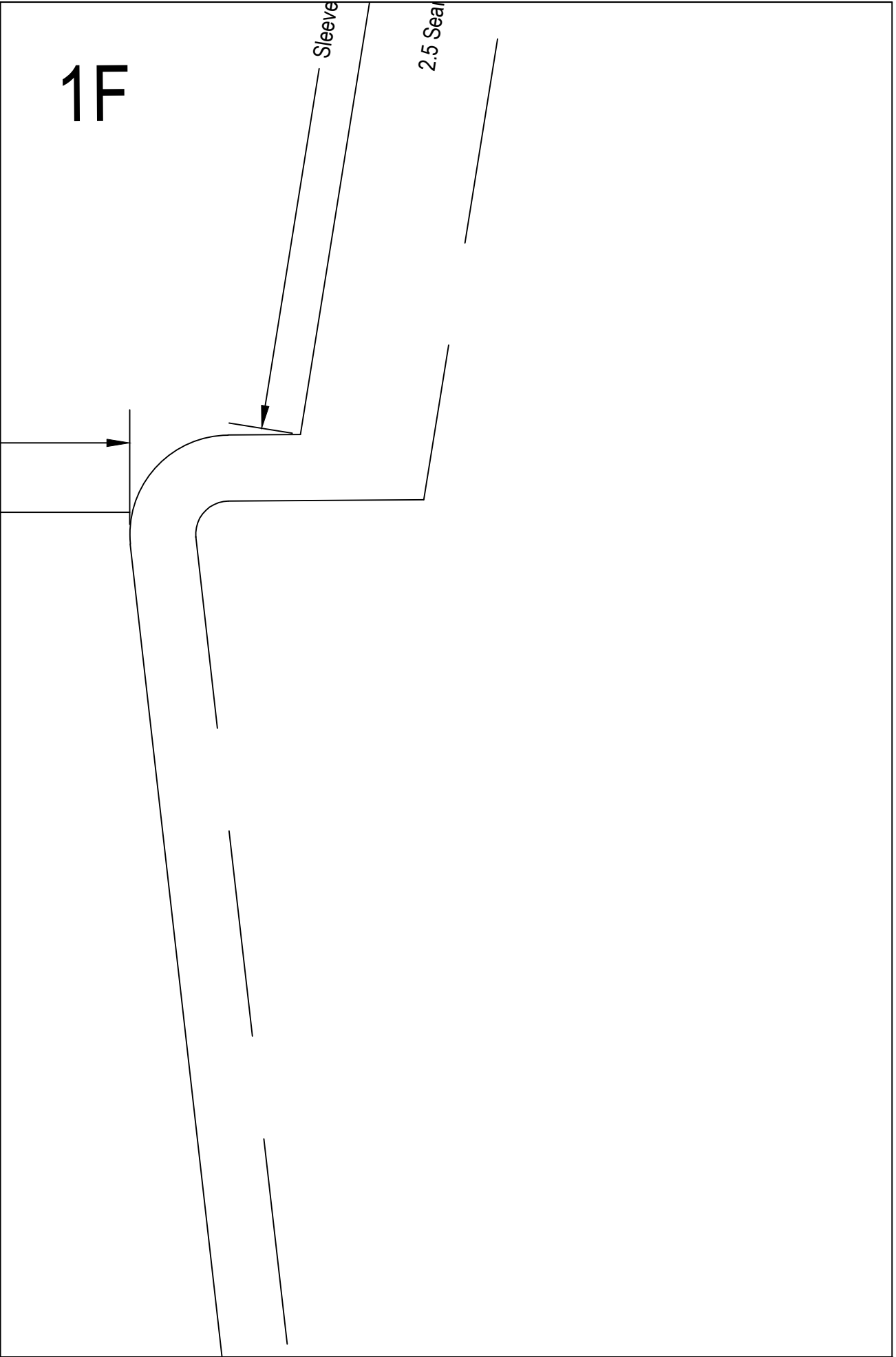
1E

25.4 Across Chest

1F

Sleeve

2.5 Seal



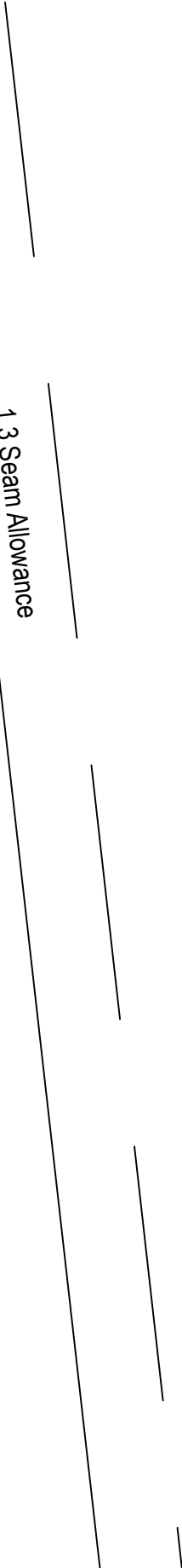
1G

51.4

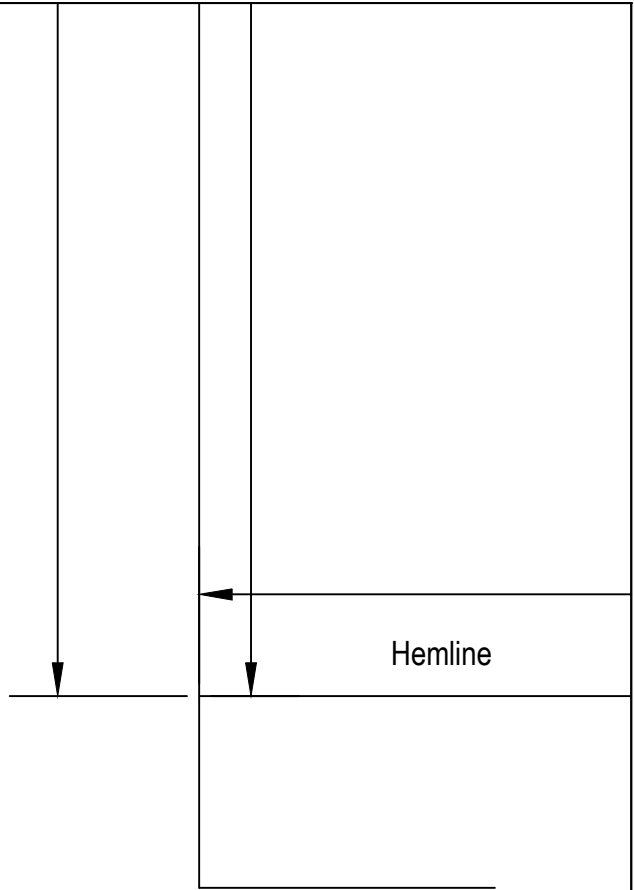
1H

11

Side Seam  
1.3 Seam Allowance



1J

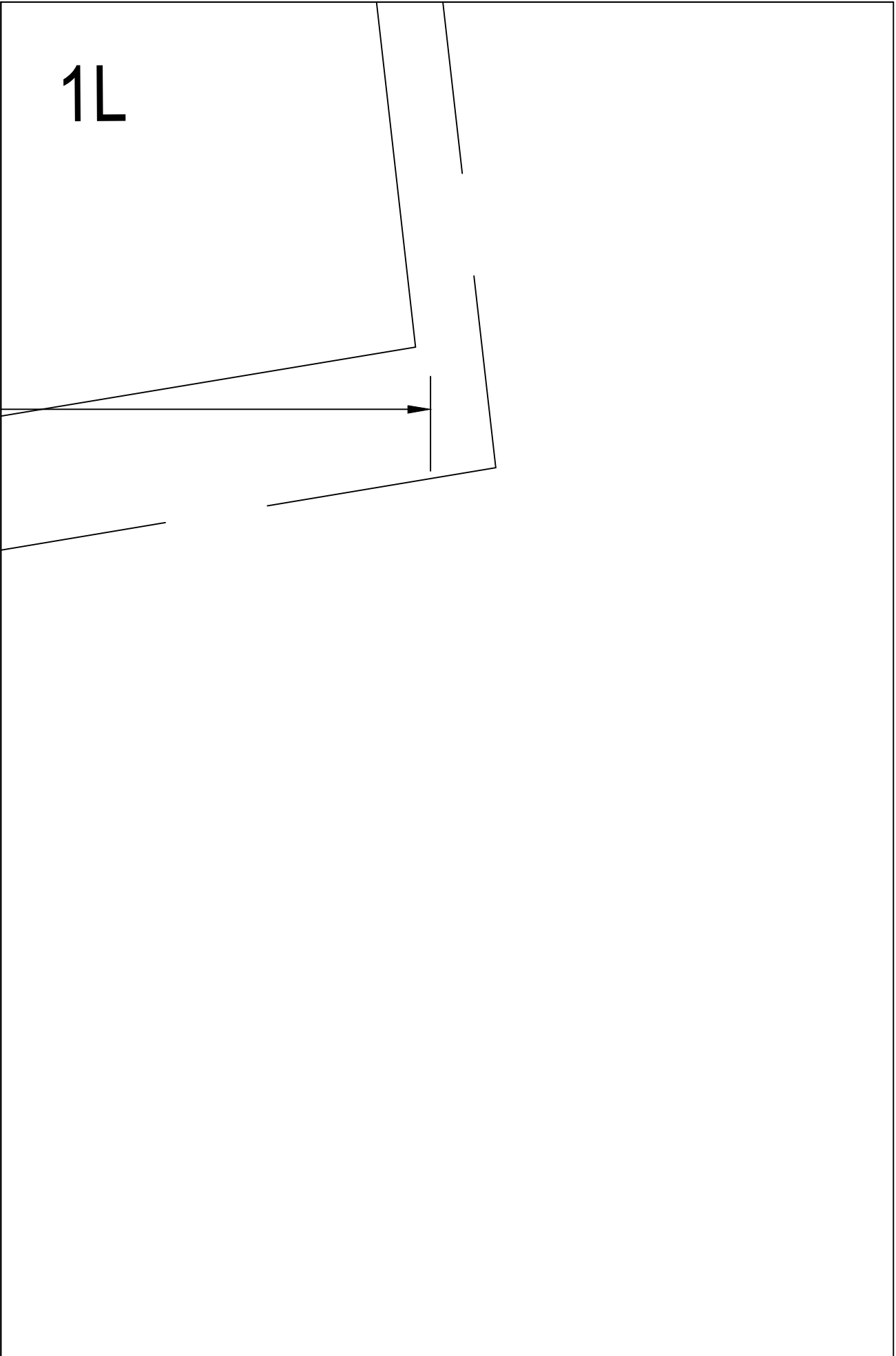


1K

31.1

2.5 Seam Allowance

1L

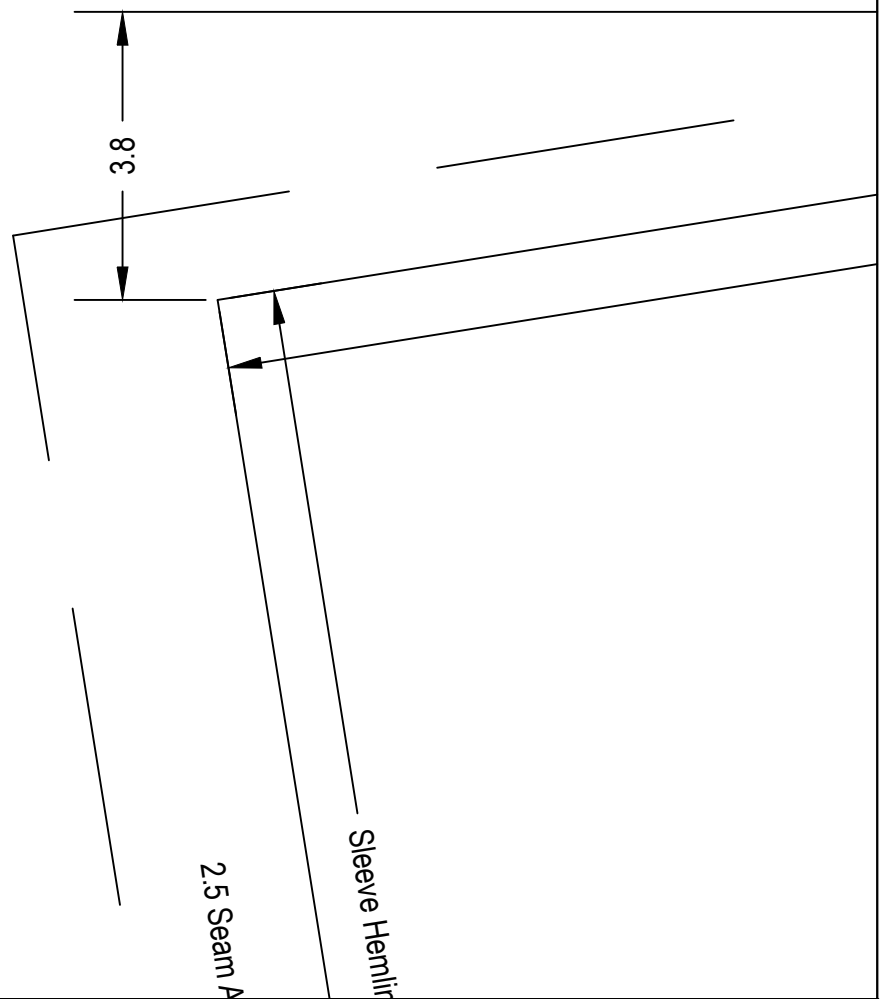




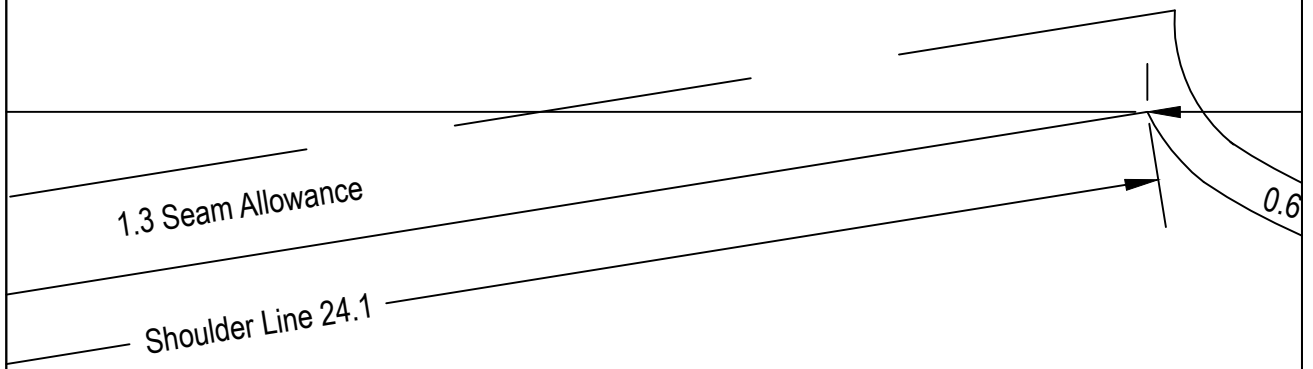
# 2A

TEMPLATE 2  
ALL DIMENSIONS IN CENTIMETERS  
TUNIC TOP

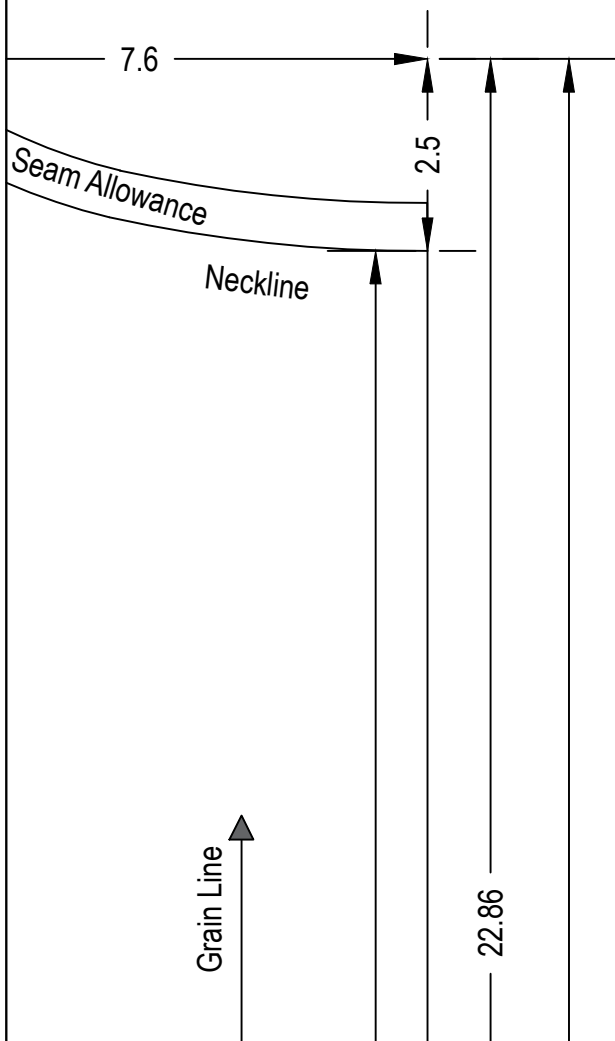
BACK  
Size: Small (S)  
Cut - 1 piece



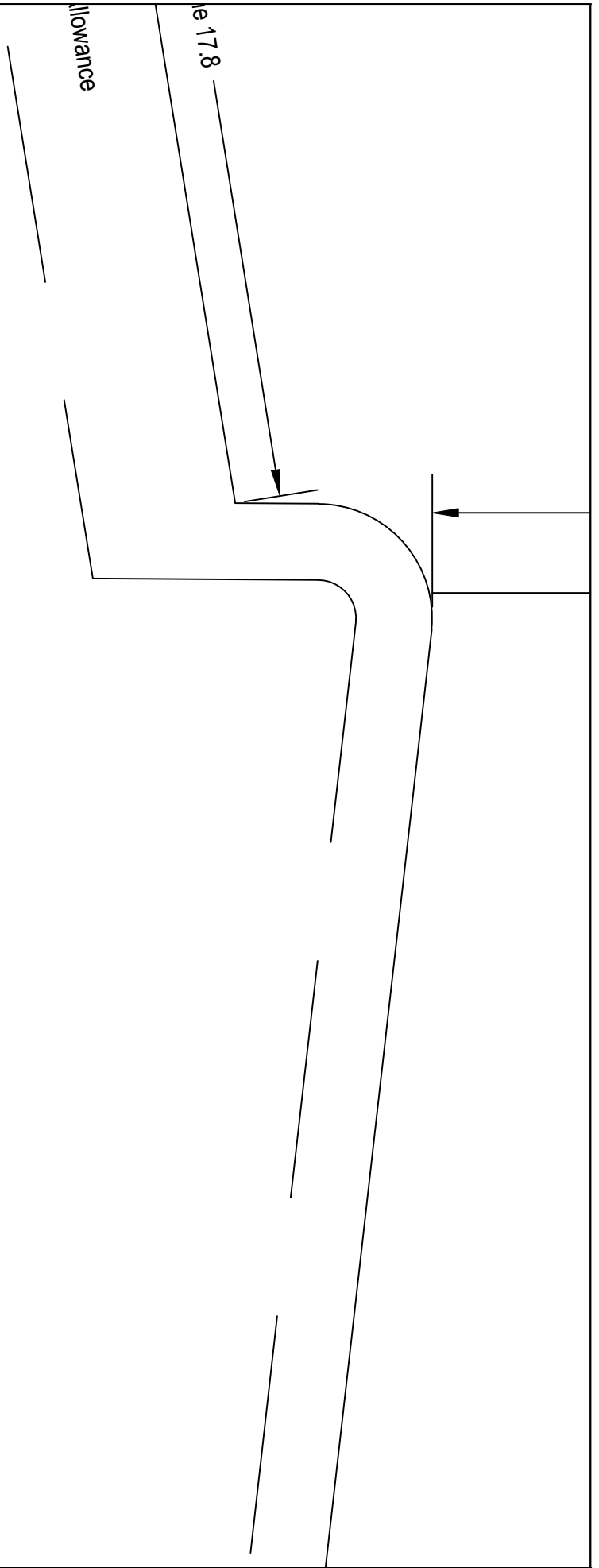
2B



2C



2D



2E

25.4 Across Chest

2F

ON FOLD

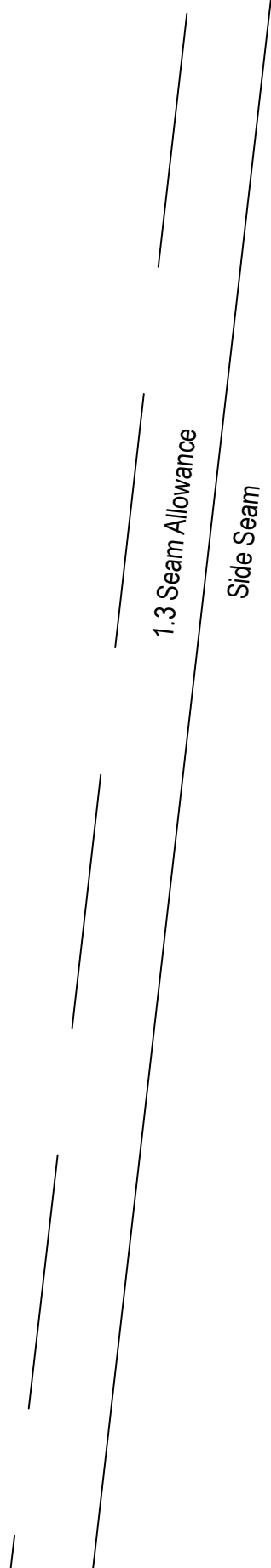
Center Back 20.3

Chest Level

74.3



2G



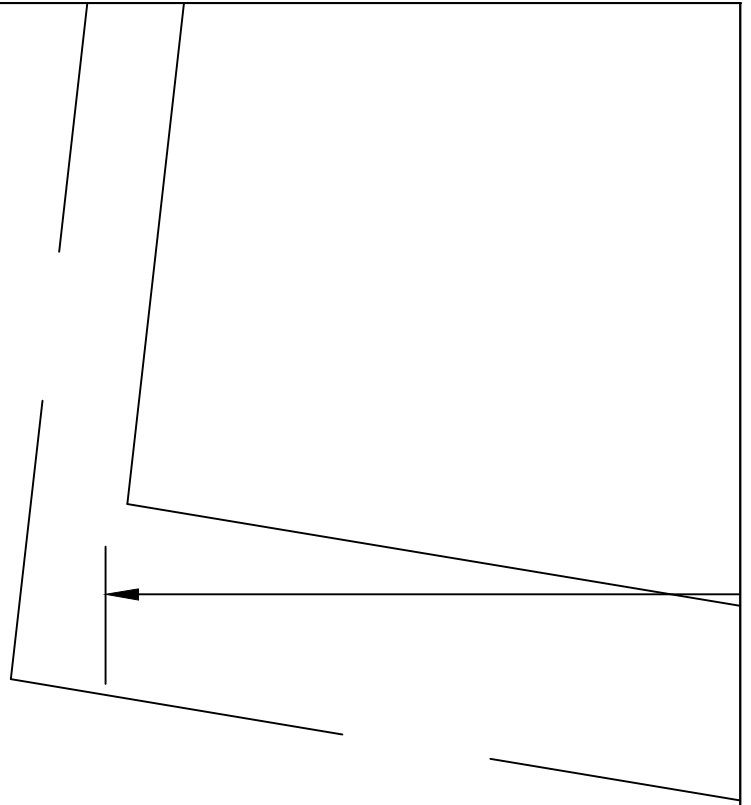
2H



21

51.4

2J



2K

31.1

2.5 Seam Allowance

2L

Hemline

